

# STOP, LOOK *AND* LISTEN AT THE MONTEZUMA DEPOT

THE MACON COUNTY HISTORICAL MUSEUM IS A NONPROFIT EDUCATIONAL ASSOCIATION THAT COLLECTS, PRESERVES AND INTERPRETS THE HISTORY OF MACON COUNTY, GEORGIA.

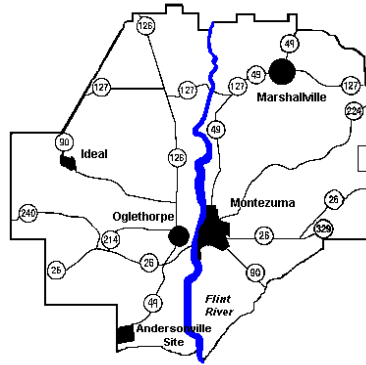


COUNTY MODEL RAILROAD

THE COLLECTION REPRESENTS THE SETTLEMENT OF THE COMMUNITIES ALONG THE BANKS OF THE FLINT,

FROM THE FIRST NATIVE AMERICANS TO THE PRESENT DAY. EXHIBITS EMPHASIZE THE PERIOD FROM THE FOUNDING OF THE COUNTY IN 1837, THROUGH THE END OF THE 20<sup>TH</sup> CENTURY.

THE MUSEUM FEATURES A MODEL RAILROAD, BOOKS, PHOTOGRAPHS, DOCUMENTS, SCRAP BOOKS, A DIGITAL PHOTO ARCHIVE, ARROWHEADS, ARTIFACTS, FARMING IMPLEMENTS, FURNISHINGS, HOME WARES AND OTHER CULTURAL OBJECTS.



## FREE ADMISSION

THE MUSEUM IS OPEN  
TUESDAY THROUGH  
SATURDAY 9-5 OR BY  
APPOINTMENT FOR  
EDUCATIONAL AND CIVIC  
GROUPS.

*FOR AN APPOINTMENT, MORE  
INFORMATION, TO LOAN AND DONATE  
ITEMS, OR TO VOLUNTEER, PLEASE  
CONTACT:*

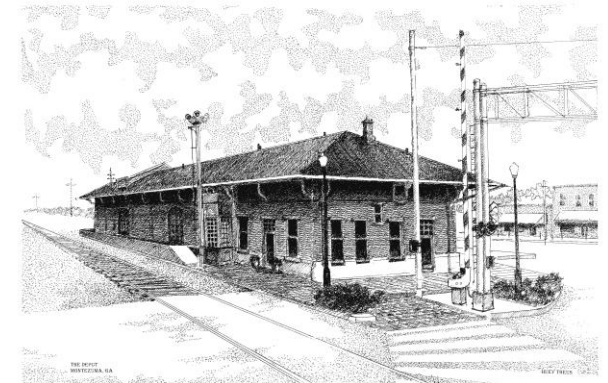
MONTEZUMA DOWNTOWN DEVELOPMENT  
AUTHORITY **CAMILLE BIELBY**  
(478) 472-4777

MACON COUNTY HISTORICAL SOCIETY  
PRESIDENT & HISTORICAL MUSEUM  
BOARD MEMBER **TONY BARRETT**  
(478) 967-2949

HISTORY BOOKS, HISTORIC AFGHANS AND  
NOTE CARDS ARE FOR SALE IN THE DEPOT  
GIFT SHOP.

[WWW.MACONCOUNTYGA.ORG](http://WWW.MACONCOUNTYGA.ORG)

# VISIT THE MACON COUNTY HISTORICAL MUSEUM



DOWNTOWN ♦ IN THE DEPOT

97 SOUTH DOOLY STREET

AT EAST RAILROAD STREET

MONTEZUMA, GEORGIA

# ARCHITECTURE OF HOPE

*"THE SOUTH OF 1910 WAS SMALL TOWNS. ...MORE THAN ANY OTHER BUILDING OF THAT ERA, COURTHOUSES SYMBOLIZED THE COLLECTIVE SELF-IMAGE OF THE TOWNSPEOPLE."*

*"SIMILARLY...DEPOTS SYMBOLIZED THE HOPES FOR A PROMISING FUTURE, AND THE NEGLECT OF THESE DEPOTS SYMBOLIZES THE DISAPPOINTMENT OF THOSE HOPES."*

PUBLISHER'S COMMENTS FOR  
*THE COURTHOUSE AND DEPOT IN  
GEORGIA, 1833-1910: THE  
ARCHITECTURE OF HOPE IN AN AGE OF  
DESPAIR*

BY WILBER CALDWELL, 2001

MONTEZUMA'S 1890 DEPOT WAS CONSTRUCTED ON THE SITE OF AN EARLIER DEPOT. IN 1924, A CONCRETE PLATFORM WAS ADDED AND IN 1932 A BRICK FIREWALL WAS BUILT NEAR THE CENTER OF THE BUILDING.

NORFOLK SOUTHERN RAILROAD GAVE THE MONTEZUMA DEPOT TO THE MACON COUNTY HISTORICAL SOCIETY IN 1980. THE NATIONALLY REGISTERED STRUCTURE WAS REHABILITATED IN 2002 AND NOW SERVES AS THE MACON COUNTY HISTORICAL MUSEUM. THE MUSEUM PRESERVES AND MAINTAINS MEMORIES OF THE EVENTS AND PEOPLE THAT SHAPED MACON COUNTY.



Miona Springs Hotel famed for flavored mineral springs

VISITORS—AND THOSE WHOSE FAMILIES' LIVES ARE INTERTWINED WITH THE STORIES OF THE TOWNS THAT FORMED ON THE BANKS OF THE FLINT RIVER—CAN LEARN ABOUT PLACES THAT EXIST ONLY IN MEMORIES AND FADED PHOTOGRAPHS. A SPINNING WHEEL, POTBELLIED STOVE, BUTTER CHURN, WASHBOARD AND STOVE-HEATED IRONS TELL A TALE OF TIMES WHEN IT TOOK WORKING DAWN TO DUSK TO FEED AND CLOTHE A FAMILY HOME FROM A DAY IN THE FIELDS.

ADDING MACHINES, TYPEWRITERS AND PHOTOS OF SWITCHBOARD OPERATORS REMIND US THAT RURAL ELECTRIFICATION WAS NOT THAT LONG AGO. CHARTS AND MAPS SHOW THE 50-MILLION-YEAR-OLD TALLAHATTA FORMATION, A MARINE ECOSYSTEM WHICH LEFT FOSSILIZED SEASHELLS BEHIND ON THE RIVER BLUFF.

THE MODEL RAILROAD LINKS HISTORY TO THE PRESENT. LOCAL HERITAGE IS AS TIED TO THE RAILROAD AS IT IS TO THE FLINT RIVER AND PEACH FARMING. MACON COUNTY REMAINS A CROSSROAD FOR COMMERCE JUST AS IT WAS IN THE DAYS OF THE TRADING POST, STAGECOACH AND STEAMBOAT.

# MUSEUM COLLECTIONS MANAGEMENT

IT IS THE POLICY OF THE MACON COUNTY HISTORICAL MUSEUM TO COLLECT ONLY THOSE OBJECTS MADE AND/OR USED IN MACON COUNTY

- ✧ ASSOCIATED WITH A PERSON, PLACE OR EVENT IN THE COUNTY
- ✧ TYPICAL OR REPRESENTATIVE OF OBJECTS MADE OR USED IN THE COUNTY
- ✧ HISTORICAL, CULTURAL OR AESTHETIC IN NATURE
- ✧ COVER THE PERIOD FROM 1837 TO 2000 AND FOR WHICH THE MUSEUM HAS AN ULTIMATE USE AND THE ABILITY TO CARE FOR AND PRESERVE

